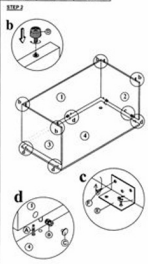
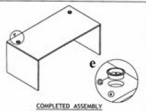
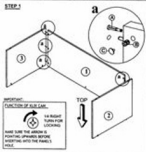


Assembly Instructions  
**MODEL NO. : N 143**  
**CREENZA SHELL**

**T**hank you for purchasing the "N" product.

<b>A</b>  Cam Lock 11 Pcs	<b>B</b>  Kits Cam 11 Pcs	<b>C</b>  Housing Cap 11 Pcs	<b>D</b>  Adjustable Glider 4 Pcs	<b>E</b>  7 Hole L-Bracket 9 Pcs	<b>F</b>  Screw #8 x 1/2" 30 Pcs	<b>G</b>  Silver-Black Grannet 2 Pcs
--	---	--	--	---	---	---



**IMPORTANT NOTE :**

- Place all wooden parts on a clean and smooth surface such as a rug or carpet to avoid the parts from being scratched.
- Check to be sure that you have all parts and hardware.
- Remove all wrapping materials, including staples & packing straps before you start to assemble.
- Do not tighten all screws/bolts until all completely assembled.
- Keep all hardware parts out of reach of children.