

Assembly Instructions  
**MODEL NO. N144**  
 18" x 24" x 18" (457 x 609 x 457 mm)

STEP	1	2	3	4	5	6	7	8	9	10
DESCRIPTION	Insert Screws	Insert Screws	Insert Screws	Insert Screws	Insert Screws	Insert Screws	Insert Screws	Insert Screws	Insert Screws	Insert Screws

STEP 1



**WARNING**  
 DO NOT REMOVE THE TOP COVER UNTIL ALL SCREWS ARE IN PLACE.



STEP 2



STEP 3

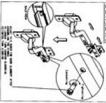


DO NOT REMOVE THE TOP COVER UNTIL ALL SCREWS ARE IN PLACE.

STEP 4



**DETAIL BOX**



**IMPORTANT NOTES:**

Place all electrical parts in a dry and proper location and at a safe distance to avoid fire from being generated. Check to be sure that you have all parts and supplies. Removal of electrical components including removal of existing wiring before you start to assemble. Never operate or connect any electrical equipment. Read all instruction parts and of every component. It is recommended to install a device to prevent the assembly.