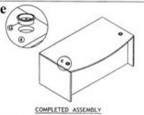
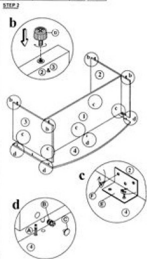
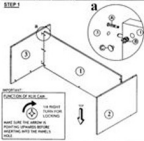


Assembly Instructions  
**MODEL NO. : N 189**  
**CURVED TOP DESK**

**T**hank you for purchasing the "N" product.

 Cam Lock 13 Pcs	 Rise Cam 13 Pcs	 Housing Cap 13 Pcs	 Adjustable Glider 4 Pcs	 7 Hole L Bracket 5 Pcs	 Screw #8 x 1/2" 30 Pcs	 60mm Black Grommet 2 Pcs
---	---	--	--	---	---	---



**IMPORTANT NOTE :**

- Place all wooden parts on a clean and smooth surface such as a rug or carpet to avoid the parts from being scratched.
- Check to be sure that you have all parts and hardware.
- Remove all wrapping materials, including staples & packing straps before you start to assemble.
- Do not tighten all screws/bolts until all completely assembled.
- Keep all hardware parts out of reach of children.